

# CASTAWAY

## 3-way business modelling

### v2016.3 INSTALLATION INSTRUCTIONS

#### STEP 1: RUN THE CASTAWAY SOFTWARE INSTALLER

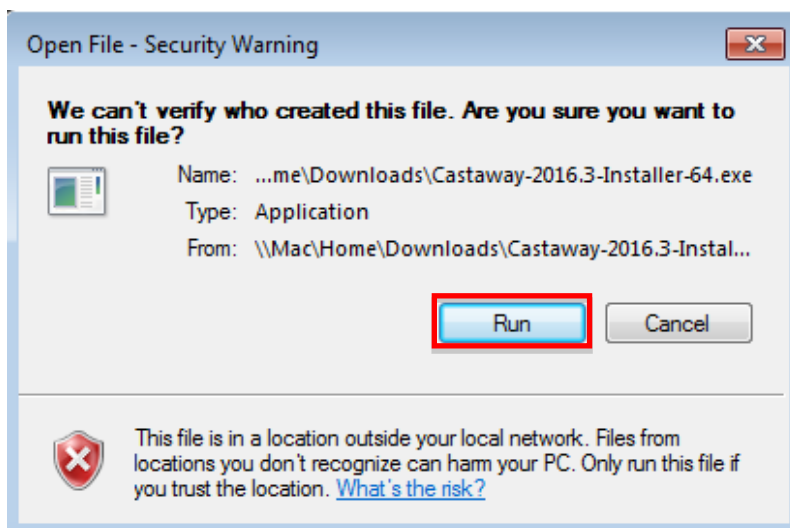
If you are using an earlier version of Castaway, a popup will appear the next time you open the program:



Click the [Castaway Download](#) link through to the file download page. Choose whether you need the 32 bit or 64 bit version, then click on the 'Evaluation Installer' to download the file.

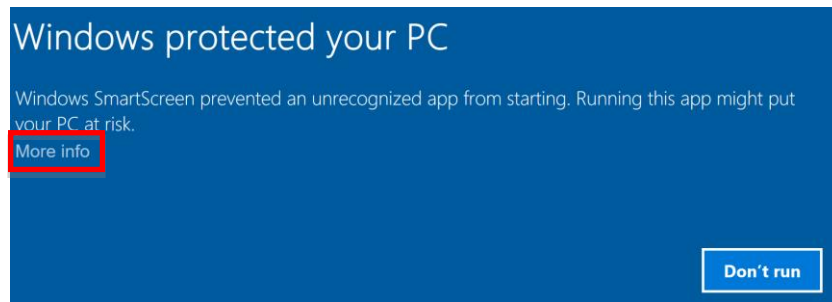
When the download is complete, run the Installer. Depending on your Windows version and security settings, you may see a warning like:

*Windows 7*

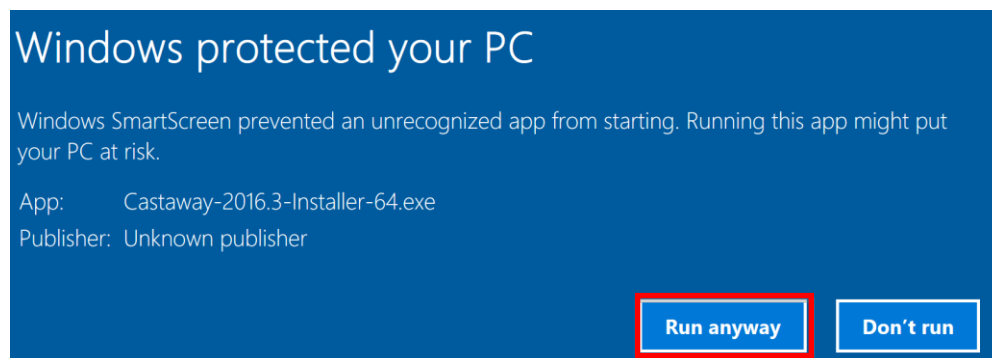


Click *Run* to continue the installation process

## Windows 10



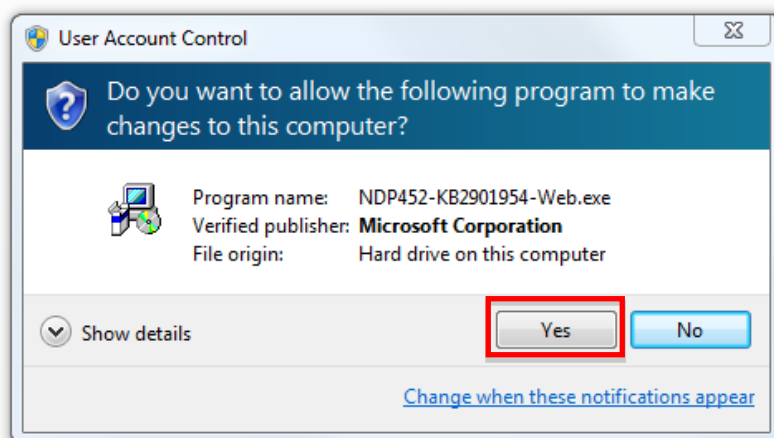
Click *More info*



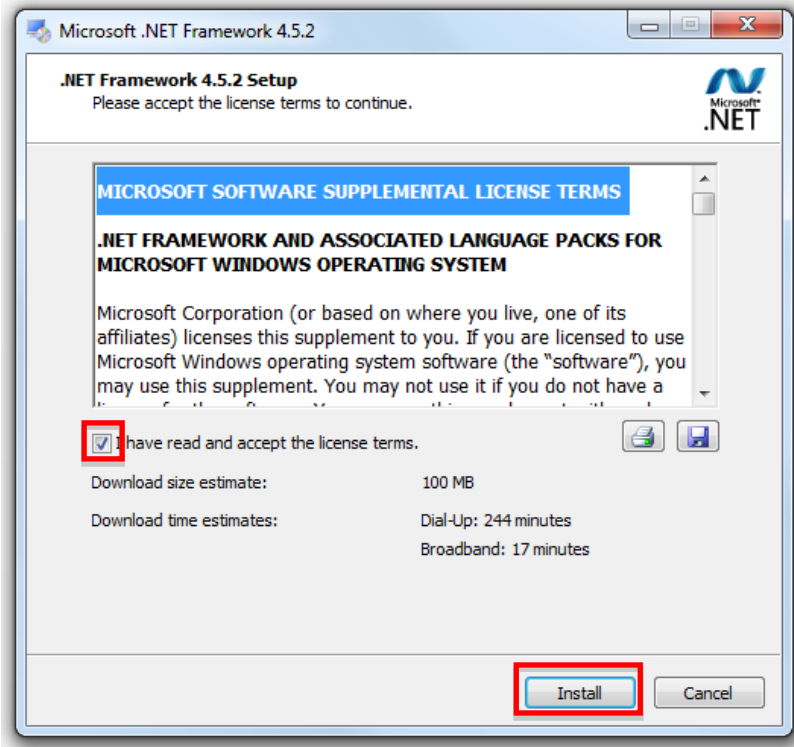
Click *Run Anyway* to continue the installation.

## STEP 2: (if required), INSTALL PRE-REQUISITES

Castaway v2016.3 requires Microsoft .NET Framework 4.5.2 (or later) to run successfully. When the Software Installer is run, it will review your system setup for to confirm whether NET 4.5.2 is already installed. If not, an automatic download will begin. Click 'Yes' to confirm the installation.

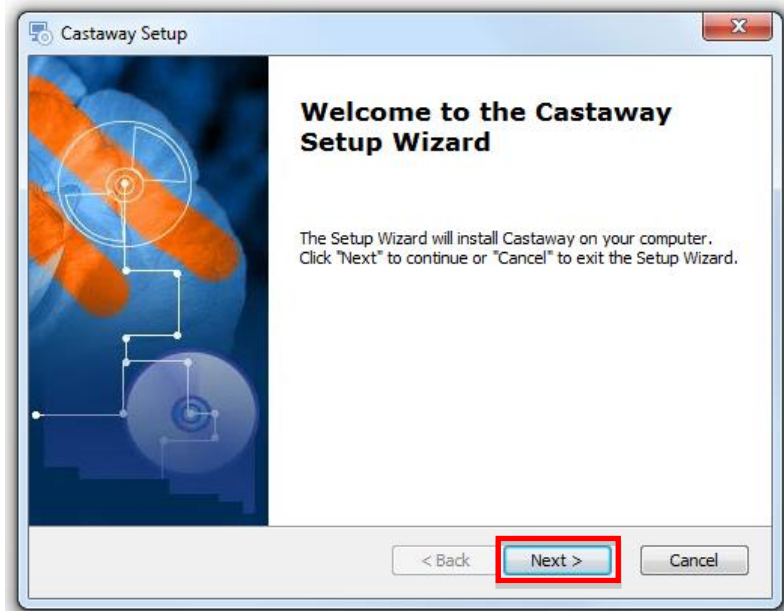


Check the box to accept the licence terms and then click 'Install'



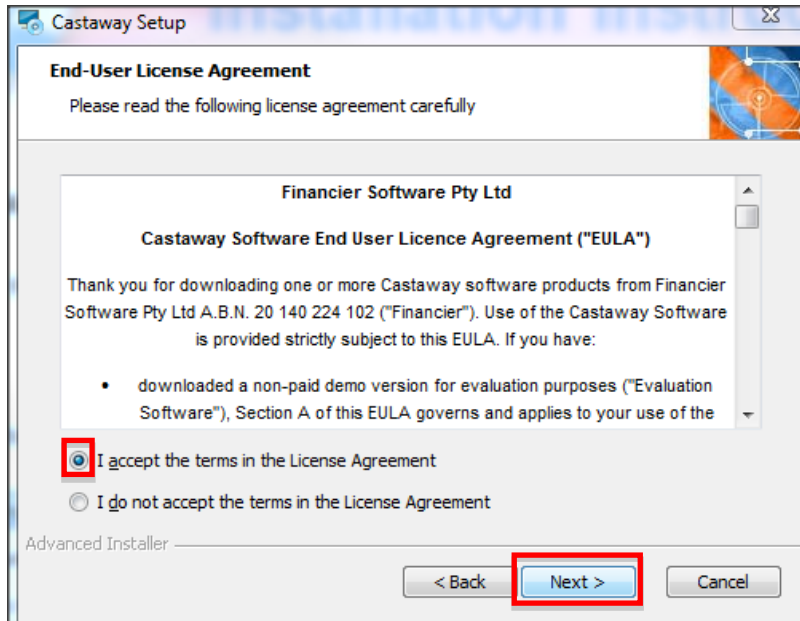
## STEP 3: INSTALL CASTAWAY FORECASTING

3.1 When the download process has completed, the 'Castaway Setup Wizard' will launch.



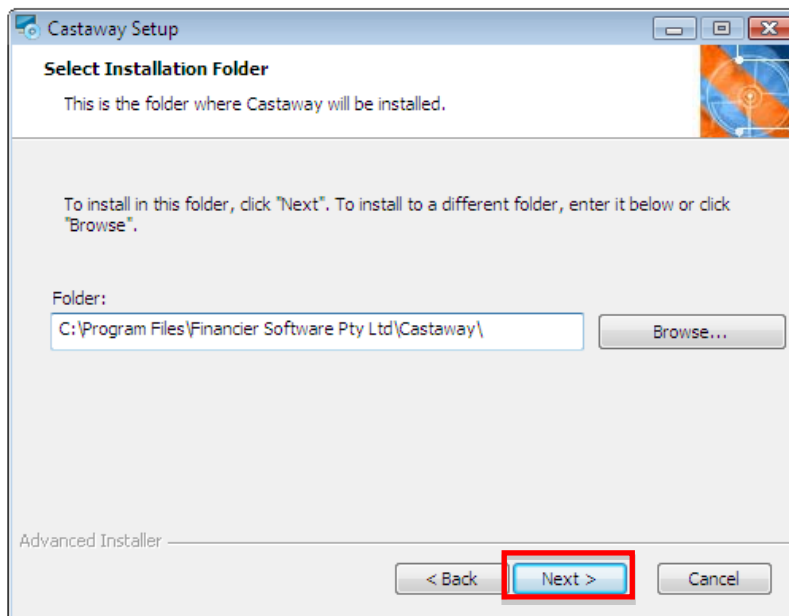
Select 'Next' to continue

### 3.2 Read and accept the Castaway Software End User Licence Agreement



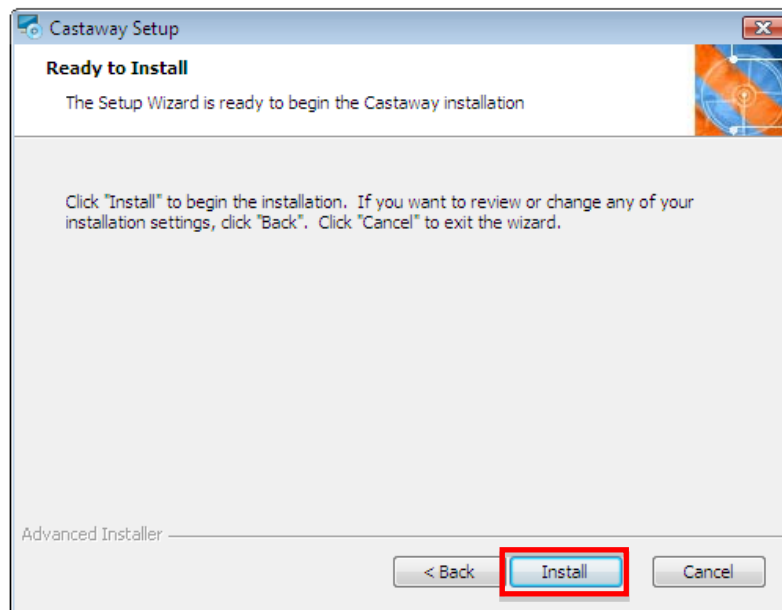
Select 'Next' to continue

### 3.3 Select the Installation Folder where the program files will be installed (note this is not the location where data files are stored). Select 'Browse' to choose your own location, or accept the default location and select 'Next'.

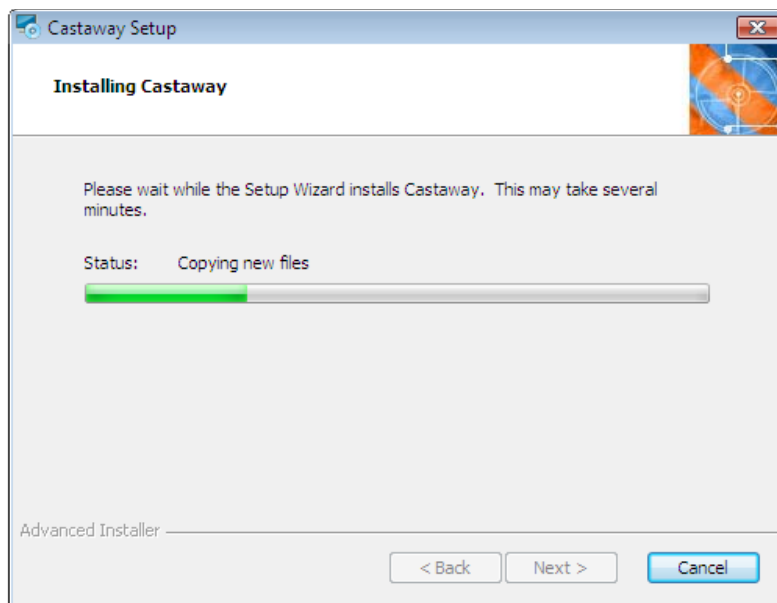


Select 'Next' to continue

### 3.4 Select 'Install' to start the Castaway Forecasting installation process

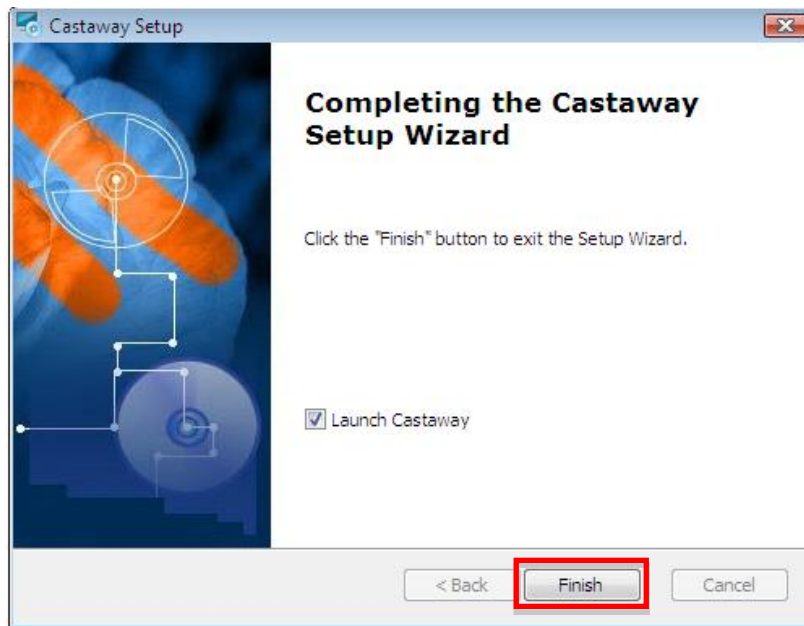


A status bar will show the progress as Castaway Forecasting is installed



## STEP 4: FINALISE THE INSTALLATION AND LAUNCH CASTAWAY FORECASTING

The installation process is now complete. Select '*Finish*' to launch Castaway Forecasting



You will now have an icon in your programs menu (Start > All Programs > Castaway) as follows:



Select this icon to launch Castaway Forecasting

If you are upgrading from a fully licenced earlier version of Castaway Forecasting, your licence should remain valid.

Otherwise, the software is initially installed in 'Trial' mode. You have full access to Castaway Forecasting for a 30 day trial period. Each time you open Castaway Forecasting, you will see a countdown to remind you of the number of days you have left.

## GOT QUESTIONS? CONTACT OUR SUPPORT TEAM

If you would like more information or need some assistance, please contact our friendly support team:

- Phone: +61 2 9569 7144
- Email: [support@castawayforecasting.com](mailto:support@castawayforecasting.com)